

Project:

# Dream Downtown

346 West 17th Street

Phase 2

Schedule, Specifications, Elevations and Details

Contents	Page
Schedule	S 1
Specifications, Materials	S 2
Hardware Schedule	S 3
Revisions	S 4
Elevations	E 1 - E 6
Details	D1 - D24

Case #	Unit #	Location	Qty	Unit	Qty	Frame size [mm]		Jamb depth [mm]	Wood type	Finish type	Glass type	Handle height from bottom of sash	Hinge Side from Interior	Elevation Page
						width	height							
D21	101J	Vestibule 123 South Wall	1	Transom and outswing		4312	3942	116	W1	F1				E 1
	101K			Door assembly		14'-1 3/4"	12'-11 3/16"	4 9/16"						
	101L			Transom	1	4312	910		W1	F1	-			
						14'-1 3/4"	2'-11 13/16"							
				Outswing Pivot Door	1	1069	3032		W1	F1	G 2	976	left	
						3'-6 1/16"	9'-11 3/8"					3'-2 7/16"		
				Outswing double Pivot door	1	2130	3032		W1	F1	G 2	976	left / right	
						6'-11 7/8"	9'-11 3/8"					3'-2 7/16"		
				Outswing Pivot Door	1	1069	3032		W1	F1	G 2	976	right	
						3'-6 1/16"	9'-11 3/8"					3'-2 7/16"		
D45	101E	Vestibule 123 North Wall	1	Outswing Door Assembly		4312	3942	116						E 3
	101F					14'-1 3/4"	12'-11 3/16"	4 9/16"						
	101G			Outswing Pivot Door	1	1069			W1	F1	G 1	203	left	
						3'-6 1/16"						8"		
				Outswing Double Pivot Door	1	2131			W1	F1	G 1	203	left / right	
						6'-11 7/8"						8"		
				Outswing Pivot Door	1	1069			W1	F1	G 1	203	right	
						3'-6 1/16"						8"		
D73	107	Lobby North Garden	1	Outswing Pivot Door	1	1157	3942	116	W1	F1	G 1	203	right	E 4
						3'-9 9/16"	12'-11 3/16"	4 9/16"				8"		
D74	251D	2nd Floor Pool/Lounge	1	Outswing Double Pivot Door	1	1875	2469	116	W1	F1	G 1		right / left	E 5
						6'-1 13/16"	8'-1 3/16"	4 9/16"						
D75	251C	2nd Floor Pool/Lounge	1	Outswing Double Pivot Door	1	1827	2469	116	W1	F1	G 1		right / left	E 5
						5'-11 15/16"	8'-1 3/16"	4 9/16"						
D76	251B	2nd Floor Pool/Lounge	1	Outswing Double Pivot Door	1	1827	2469	116	W1	F1	G 1		right / left	E 6
						5'-11 15/16"	8'-1 3/16"	4 9/16"						
D77	251E	2nd Floor Pool/Lounge	1	Outswing Pivot Door	1	914	2469	116	W1	F1	G 1		right	E 6
						3'-0"	8'-1 3/16"	4 9/16"						
D78	251A	2nd Floor Pool/Lounge	1	Inswing Double Pivot Door	1	1874	2469	116	W1	F1	G 1	838	right / left	E 6
						6'-1 3/4"	8'-1 3/16"	4 9/16"				2'-9"		
D79	101D	Vestibule 122	1	Door Panel		930	2462		W1	F1	G 2	838	right	E 2
						3'-5/8"	8'-15/16"					2'-9"		



Material	Type	Specification
Wood Species:	W1	Genuine Burmese Teak laminate ( <i>Tectona grandis</i> )
Wood Finish:	F1	WATCO Teak Oil
Glass:	G1	1" (25 mm) Insulated Glass Unit: 1/4" tempered low iron Starphire Viracon VE13-2M Low E, 1/2" airspace argon filled, 1/4" tempered low iron Starphire
	G2	3/4" (19 mm) Laminated Glass Unit: 3/8" (10 mm) low iron Starphire - 0.060" (1.52 mm) clear PVB - 3/8" (10 mm) low iron Starphire
	P1	5/8" MDF core veneered both sides with 5 mm of wood species W1 (Genuine BurmeseTeak)



Door	Floor Closer	Pivots		Intermediate Pivot(s)	Weatherstrip	Automatic Door Bottom	Bottom Rail Deadlock	Exit Device	Door Closer	Keyed Cylinder	Remarks
		Top	Bottom								
101J	Rixson L27 3/4" offset	Rixson L180	Rixson L27	N/A	Zero 335A	Athmer Stadi L-20/20	Adams Rite MS1860	N/A	N/A	Dorma	
101K	Rixson L27 3/4" offset	Rixson L180	Rixson L27	N/A	Zero 335A	Athmer Stadi L-20/20	Adams Rite MS1860	N/A	N/A	Dorma	
101L	Rixson L27 3/4" offset	Rixson L180	Rixson L27	N/A	Zero 335A	Athmer Stadi L-20/20	Adams Rite MS1860	N/A	N/A	Dorma	
101D	N/A	Rixson Model L147	Rixson Model L147	Rixson ML19	Zero 429A	Athmer Stadi L-20/20	N/A	Von Duprin 5575NL	Dorma 8916DS	Dorma	

## Dream Downtown Phase 2

[illegible]



The Case Group, LLC · 195 Cohoes Ave. · Green Island, NY 12183  
Phone: 518.720.3100 · Fax: 518.720.3110 · 1.800.227.3957

Drawing: Interior / Exterior Elevation Unit:  
Unit: D79  
Unit: 101D

Project: Dream Downtown  
Architect: Handel Architects LLP  
Builder: McGowan Builders, Inc.

Scale: 1 : 16 (3/4" = 1'-0")  
Date: August 26, 2010  
Drawn by: R McGrath

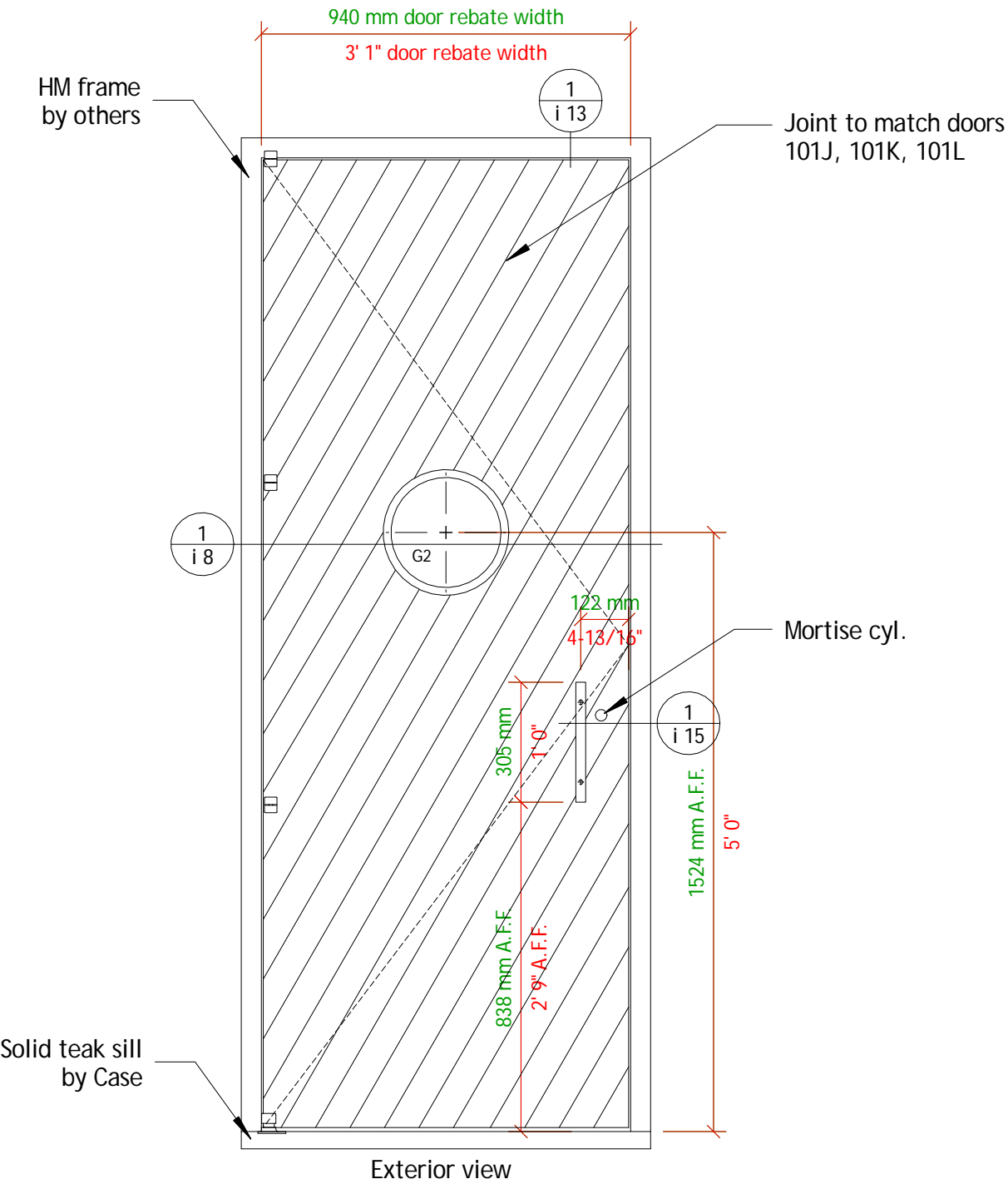
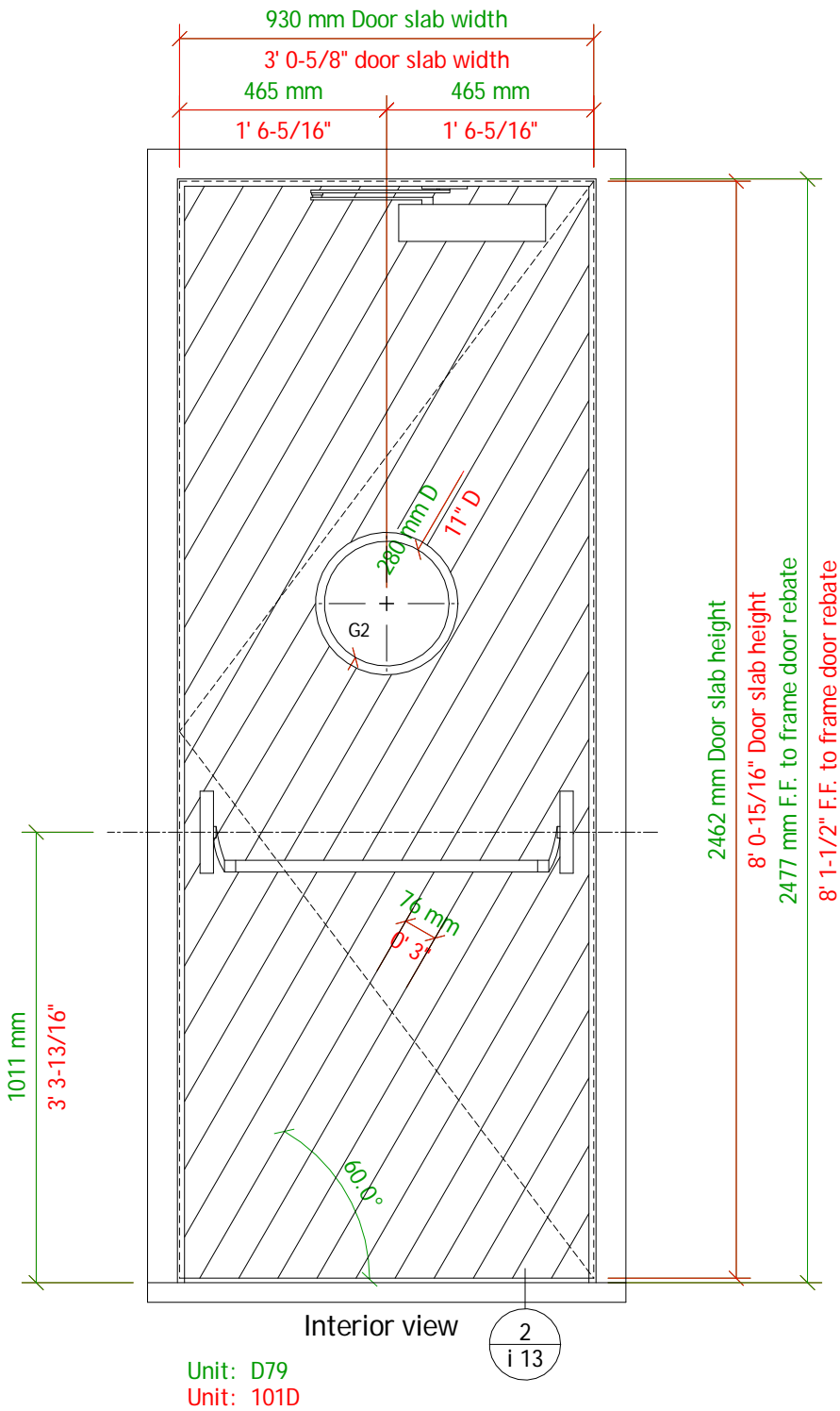
Specifications:  
Schedule on Page: S 1  
Material Specifications on Page: S 2  
Revision Date: 10/5/10  
Revision Detail on Page: S 4

Handing: Unit #:  
Exterior D79  
101D

Inch measurements are rounded to the nearest 1/16";  
Units will be manufactured to metric dimensions.

Drawing Number: Dr2-e02-r1  
Page: E 2

\*\*This door is not fire rated\*\*





The Case Group, LLC. · 195 Cohoes Ave. · Green Island, NY 12183  
Phone: 518.720.3100 · Fax: 518.720.3110 · 1.800.227.3957

Drawing: Door edge section @ 16th st south

Project: Dream Downtown  
Architect: Handel Architects LLP  
Builder: Mc Gowan Builders, Inc.

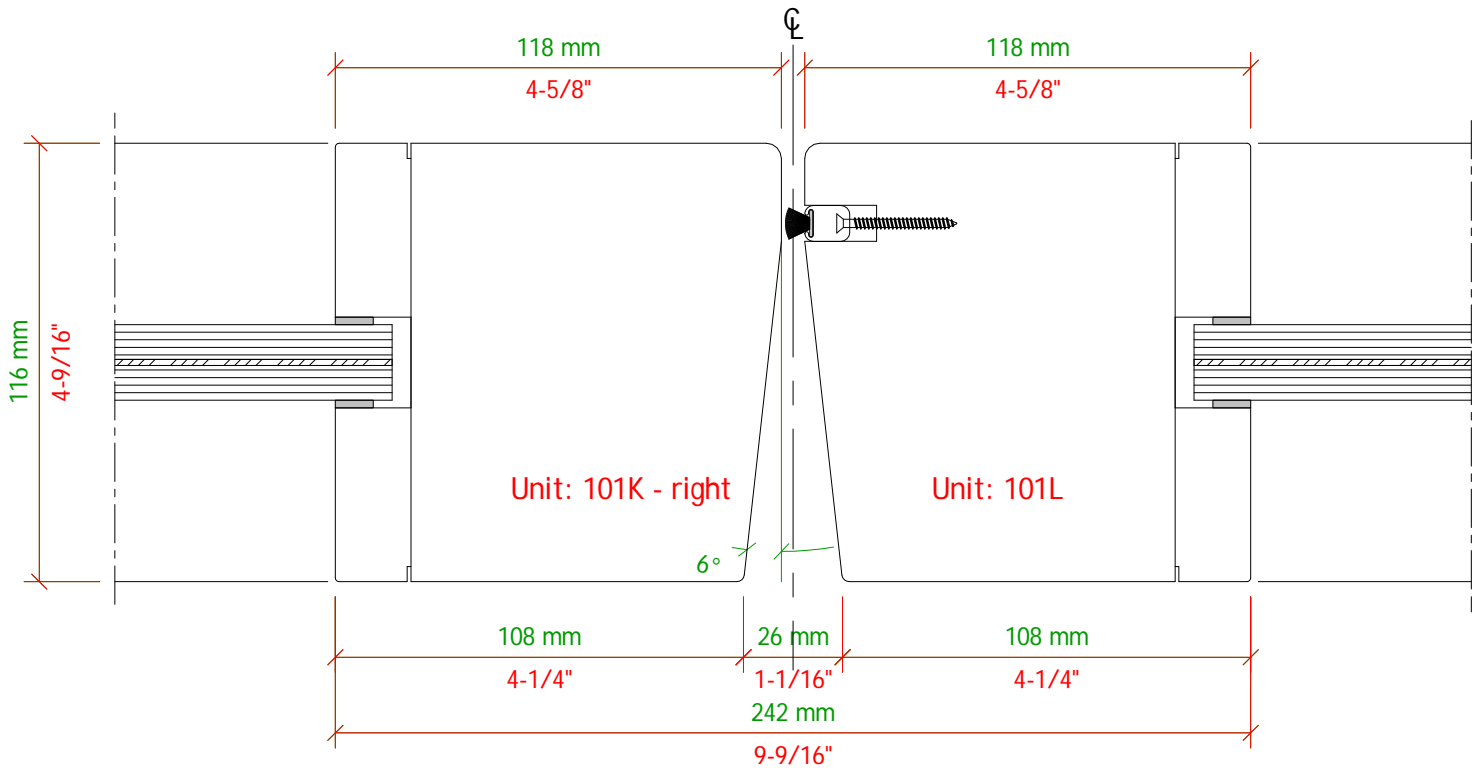
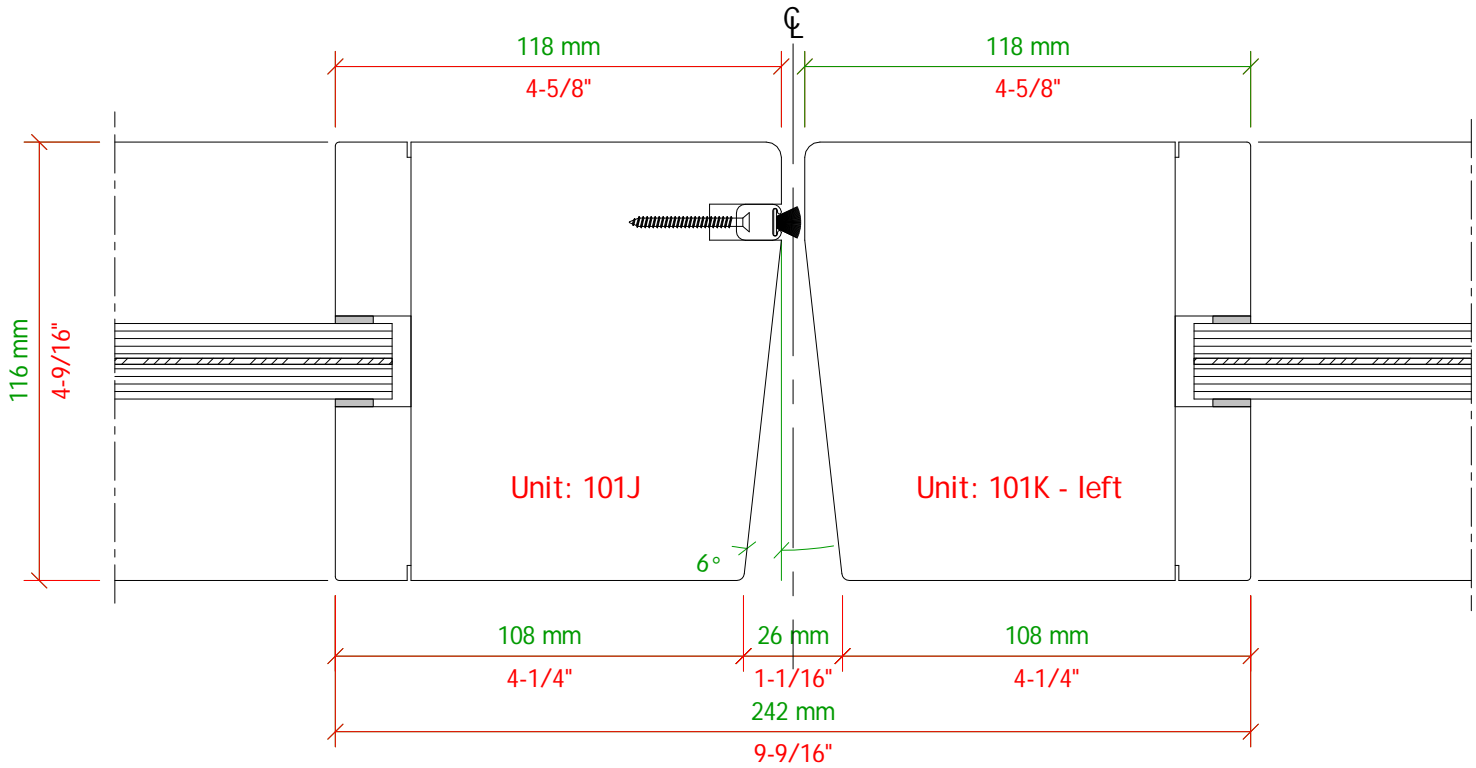
Scale: 1 : 2 (6" = 1'-0")  
Date: August 26, 2010  
Drawn by: R McGrath

Specifications:  
Schedule on Page: S 1  
Material Specifications on Page: S 2  
Revision Date: 10/5/10  
Revision Detail on Page: S 4

Inch measurements are rounded to the nearest 1/16";  
Units will be manufactured to metric dimensions.

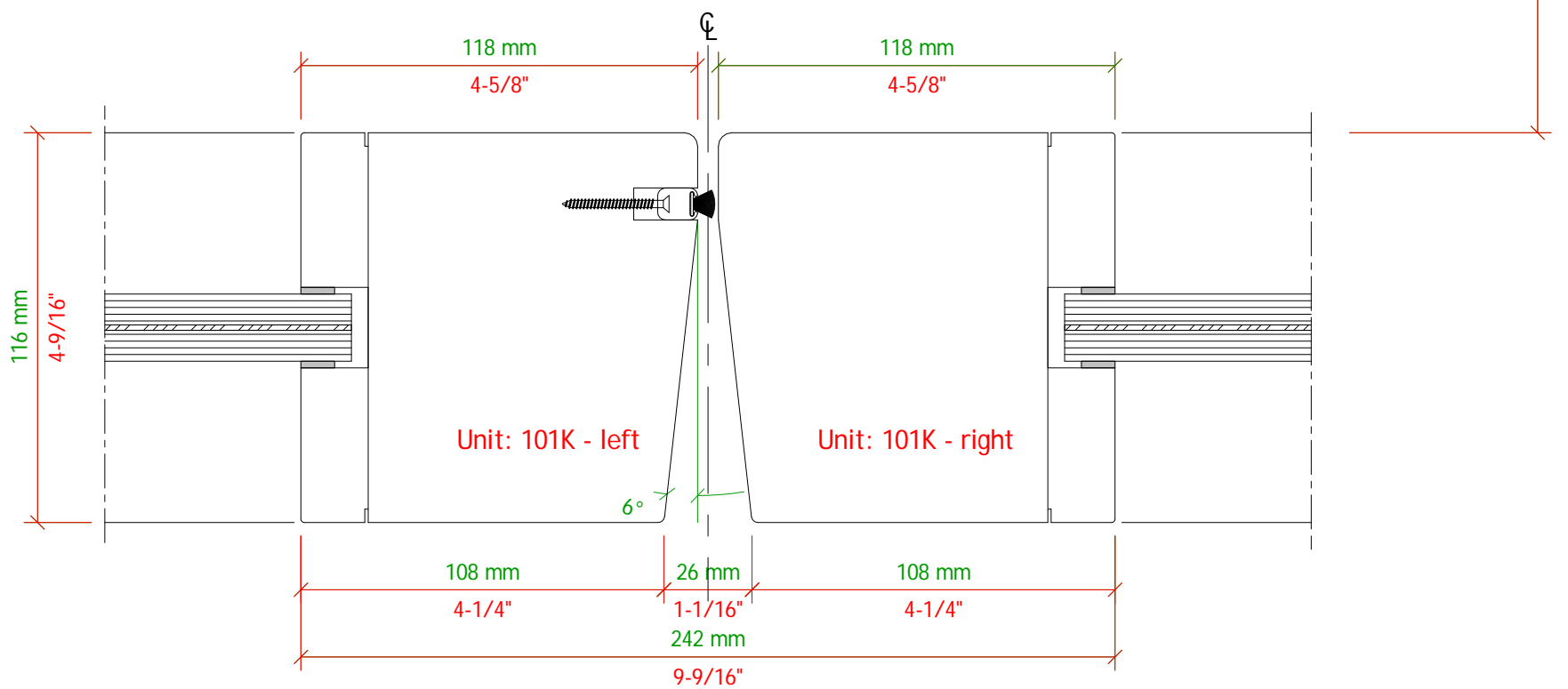
Drawing Number:  
Dr2-i01-r1

Page:  
i 1



Property Line

H



1  
i 2 Section at doors 101K left & right



The Case Group, LLC. · 195 Cohoes Ave. · Green Island, NY 12183  
Phone: 518.720.3100 · Fax: 518.720.3110 · 1.800.227.3957

Drawing: Door edge section @ 16th st south  
storefront doors 101K - left & right

Project: Dream Downtown

Architect: Handel Architects LLP

Builder: Mc Gowan Builders, Inc.

Scale: 1 : 2 (6" = 1'-0")  
Date: August 26, 2010  
Drawn by: R McGrath

Specifications:

Schedule on Page: S 1

Material Specifications on Page: S 2

Revision Date: 10/5/10

Revision Detail on Page: S 4

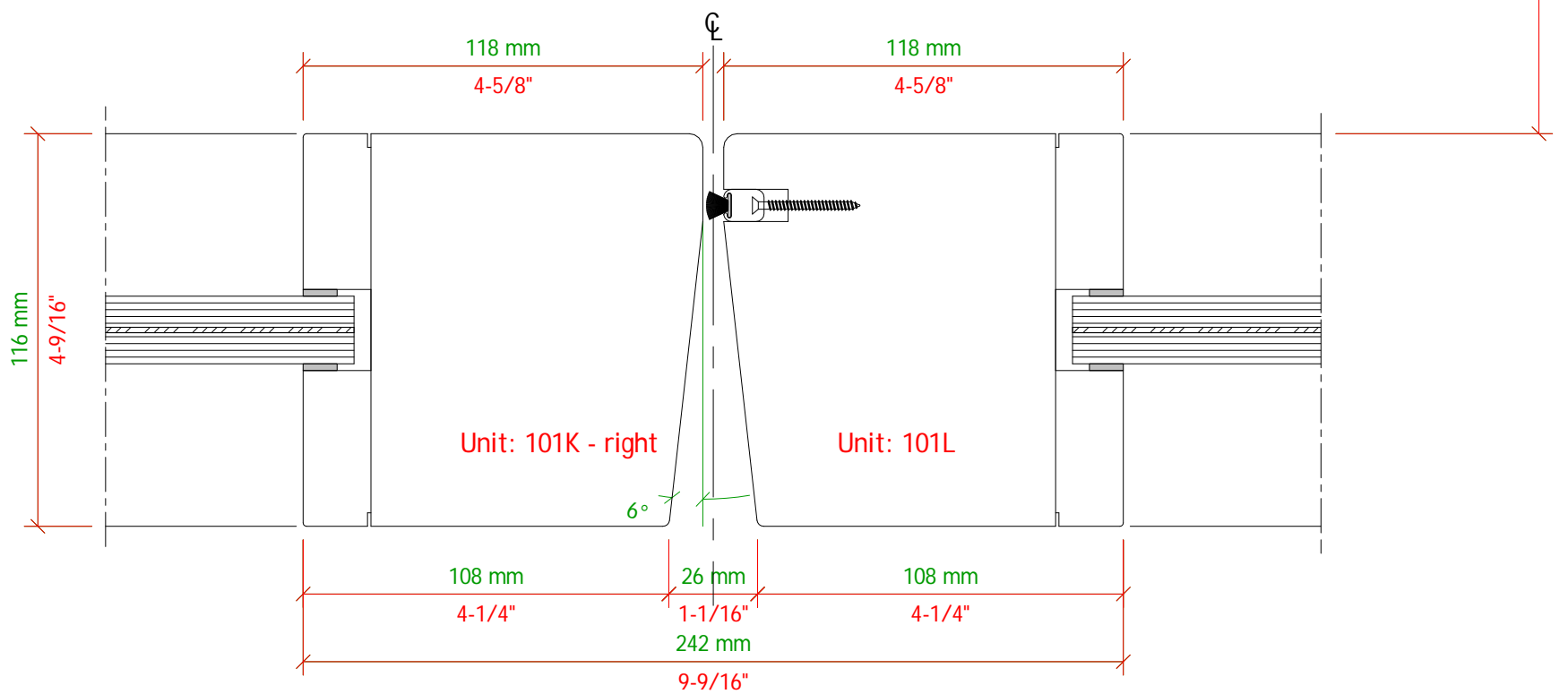
Inch measurements are rounded to the nearest 1/16";  
Units will be manufactured to metric dimensions.

Drawing Number:  
Dr2-i02-r1

Page:  
i 2

Property Line

H



1  
i 3 Section at doors 101K right & 101L



The Case Group, LLC. · 195 Cohoes Ave. · Green Island, NY 12183  
Phone: 518.720.3100 · Fax: 518.720.3110 · 1.800.227.3957

Drawing: Door edge section @ 16th st south  
storefront doors 101K - right & 101L

Project: Dream Downtown

Architect: Handel Architects LLP

Builder: Mc Gowan Builders, Inc.

Scale: 1 : 2 (6" = 1'-0")  
Date: August 26, 2010  
Drawn by: R McGrath

Specifications:

Schedule on Page: S 1

Material Specifications on Page: S 2

Revision Date: 10/5/10

Revision Detail on Page: S 4

Inch measurements are rounded to the nearest 1/16";  
Units will be manufactured to metric dimensions.

Drawing Number:  
Dr2-i03-r1

Page:  
i 3

The Case Group, LLC. · 195 Cohoes Ave. · Green Island, NY 12183  
Phone: 518.720.3100 · Fax: 518.720.3110 · 1.800.227.3957

Drawing: Jamb detail @ 16th st south  
door 101L

Project: Dream Downtown  
Architect: Handel Architects LLP  
Builder: Mc Gowan Builders, Inc.

Scale: 1 : 2 (6" = 1'-0")  
Date: August 26, 2010  
Drawn by: R McGrath

Specifications:

Schedule on Page: S 1

Material Specifications on Page: S 2

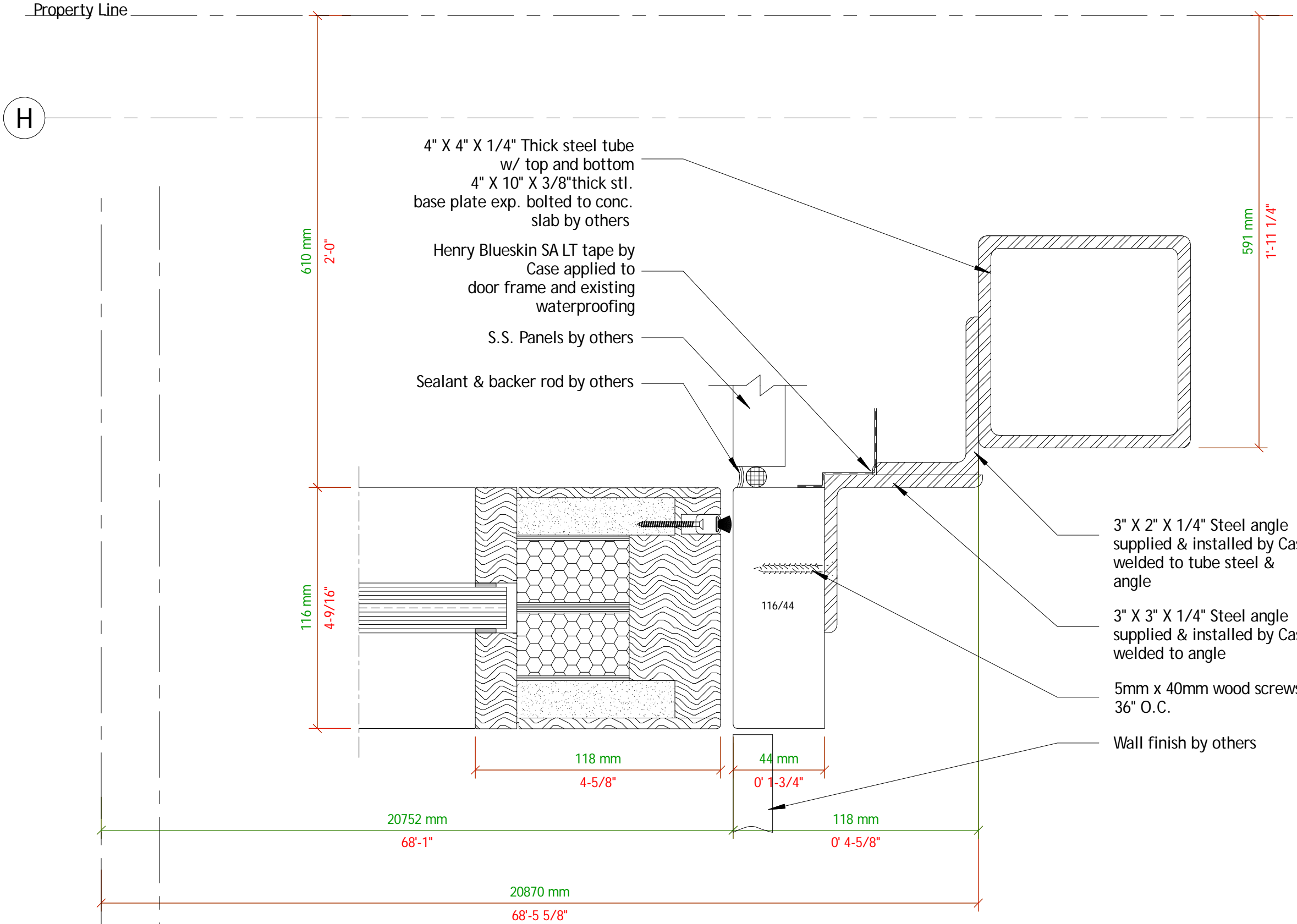
Revision Date: 10/5/10

Revision Detail on Page: S 4

Inch measurements are rounded to the nearest 1/16";  
Units will be manufactured to metric dimensions.

Drawing Number:  
Dr2-i04-r1

Page:  
i 4



1  
i 4 Ref. Handel Detail 2/ID306A

Property Line

H

Property Line

7.7

The Case Group, LLC. · 195 Cohoes Ave. · Green Island, NY 12183  
Phone: 518.720.3100 · Fax: 518.720.3110 · 1.800.227.3957

Drawing: Sill detail @ 16th st. storefront south doors 101J, 101K, 101L

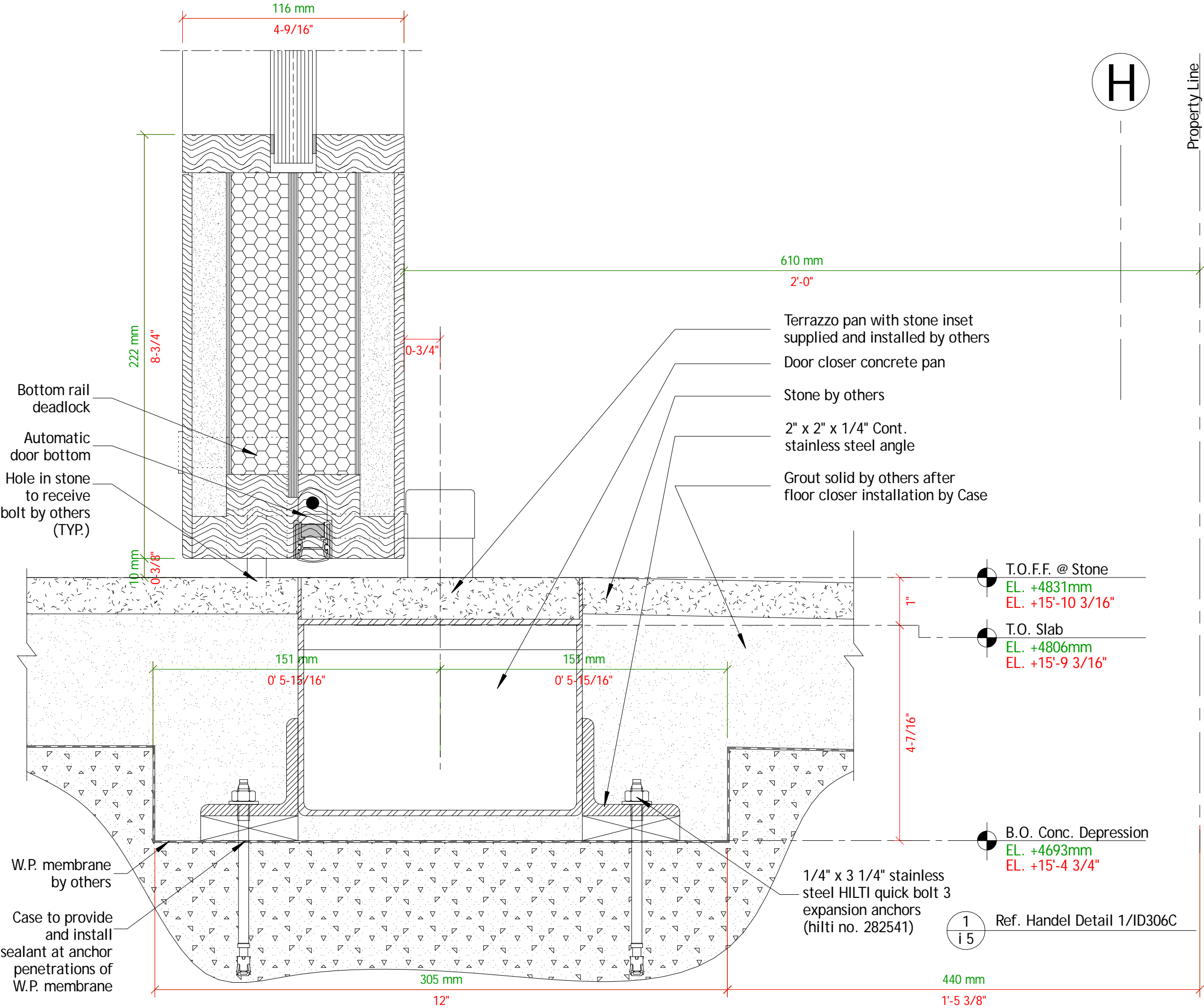
Project: Dream Downtown  
Architect: Handel Architects LLP  
Builder: Mc Gowan Builders, Inc.

Scale: 1 : 2 (6" = 1'-0")  
Date: August 26, 2010  
Drawn by: R McGrath

Specifications:  
Schedule on Page: S 1  
Material Specifications on Page: S 2  
Revision Date: 10/5/10  
Revision Detail on Page: S 4

Inch measurements are rounded to the nearest 1/16";  
Units will be manufactured to metric dimensions.

Drawing Number: Dr2-i05-r1  
Page: i 5



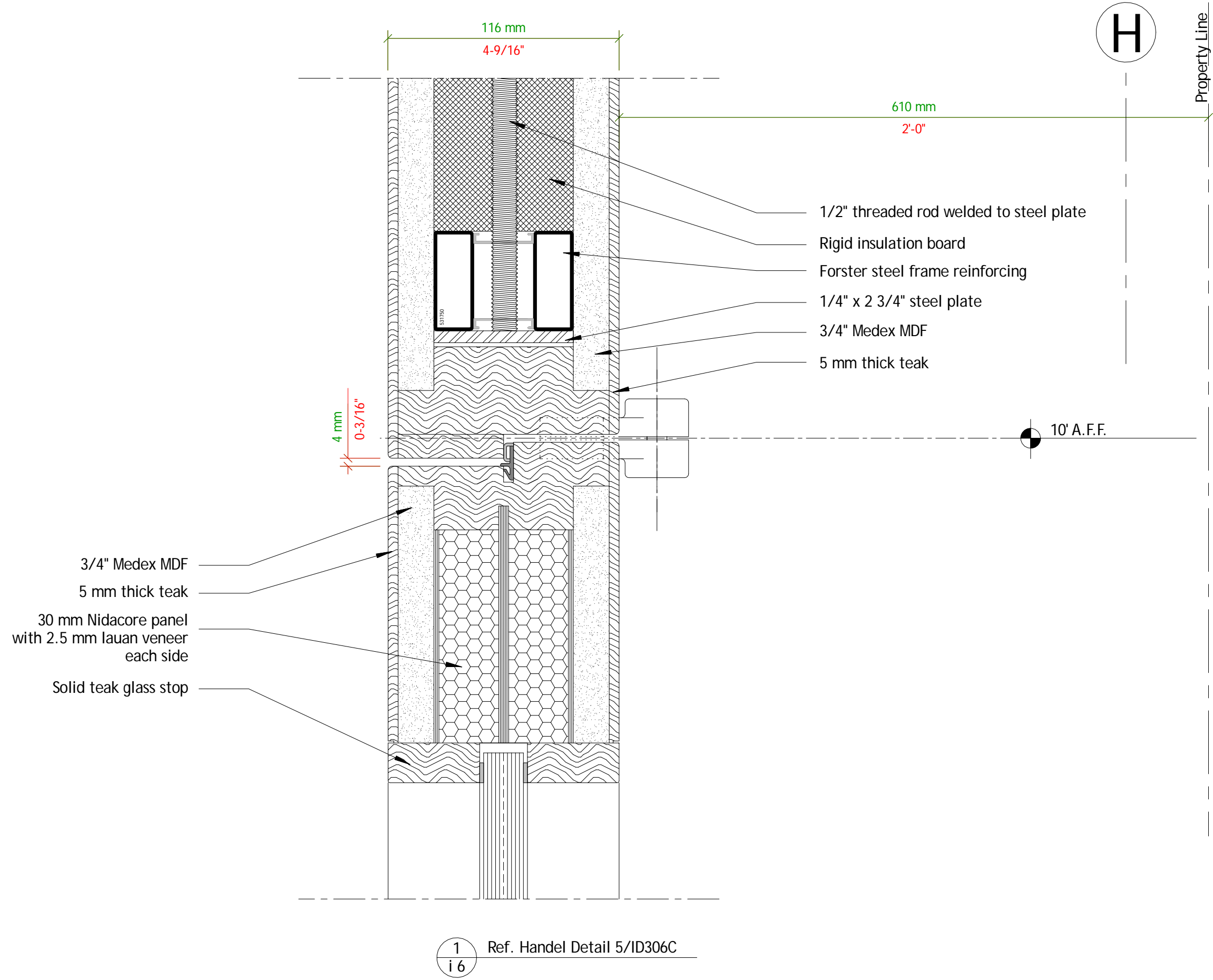
Drawing: Section @ 16th st. door/transom  
storefront south doors 101J, 101K, 101L

Project: Dream Downtown  
Architect: Handel Architects LLP  
Builder: Mc Gowan Builders, Inc.

Scale: 1 : 2 (6" = 1'-0")  
Date: August 26, 2010  
Drawn by: R McGrath

Specifications:  
Schedule on Page: S 1  
Material Specifications on Page: S 2  
Revision Date: 10/5/10  
Revision Detail on Page: S 4

Inch measurements are rounded to the nearest 1/16";  
Units will be manufactured to metric dimensions.



Drawing: Head detail @ 16th st. storefront south transoms

Project: Dream Downtown  
Architect: Handel Architects LLP  
Builder: Mc Gowan Builders, Inc.

Scale: 1 : 2 (6" = 1'-0")  
Date: August 26, 2010  
Drawn by: R McGrath

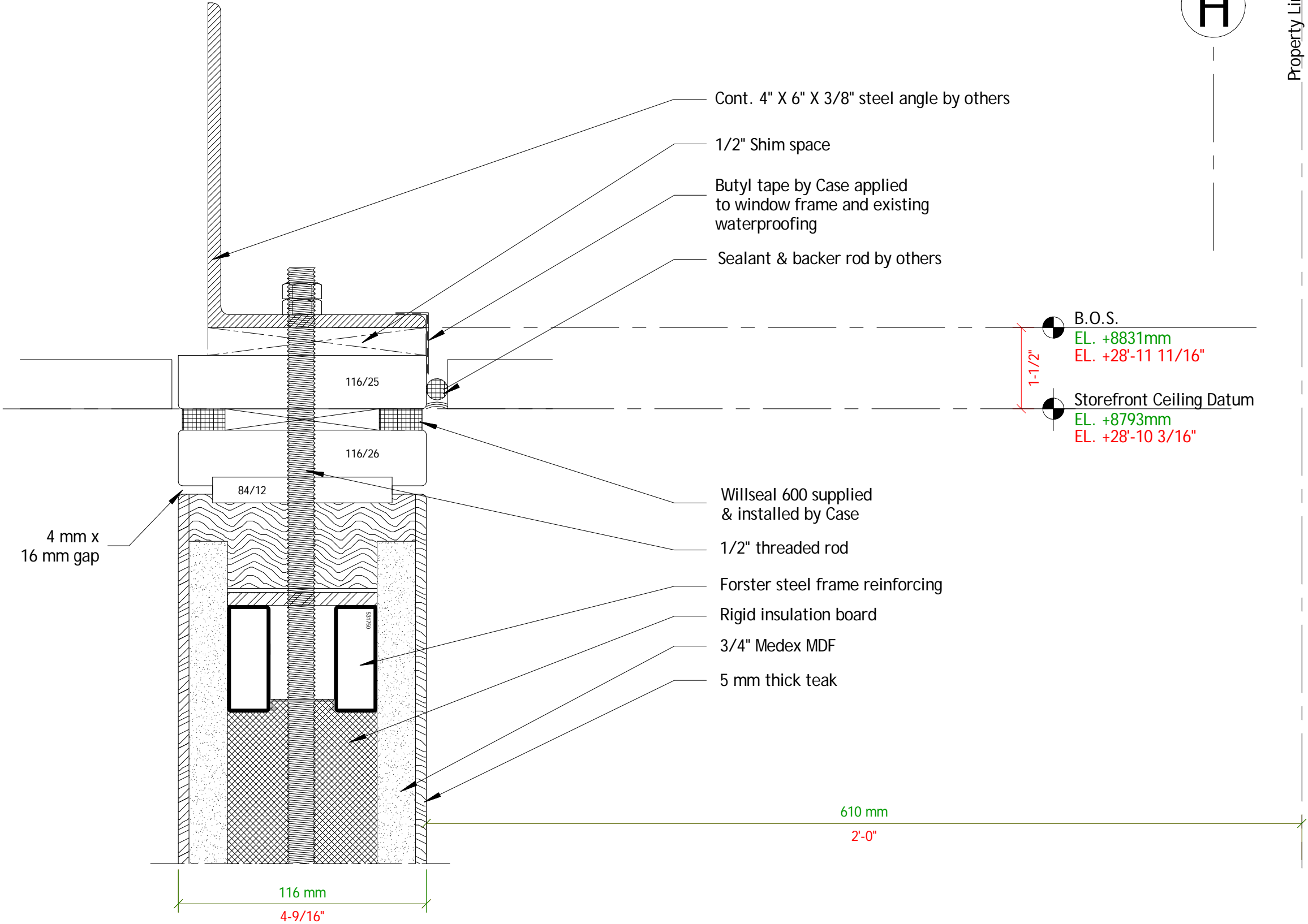
Specifications:  
Schedule on Page: S 1  
Material Specifications on Page: S 2  
Revision Date: 10/5/10  
Revision Detail on Page: S 4

Inch measurements are rounded to the nearest 1/16";  
Units will be manufactured to metric dimensions.

Drawing Number: Dr2-i07-r1  
Page: i 7

H

Property Line



1  
i 7 Ref. Handel Detail 5/ID306C



The Case Group, LLC. · 195 Cohoes Ave. · Green Island, NY 12183  
Phone: 518.720.3100 · Fax: 518.720.3110 · 1.800.227.3957

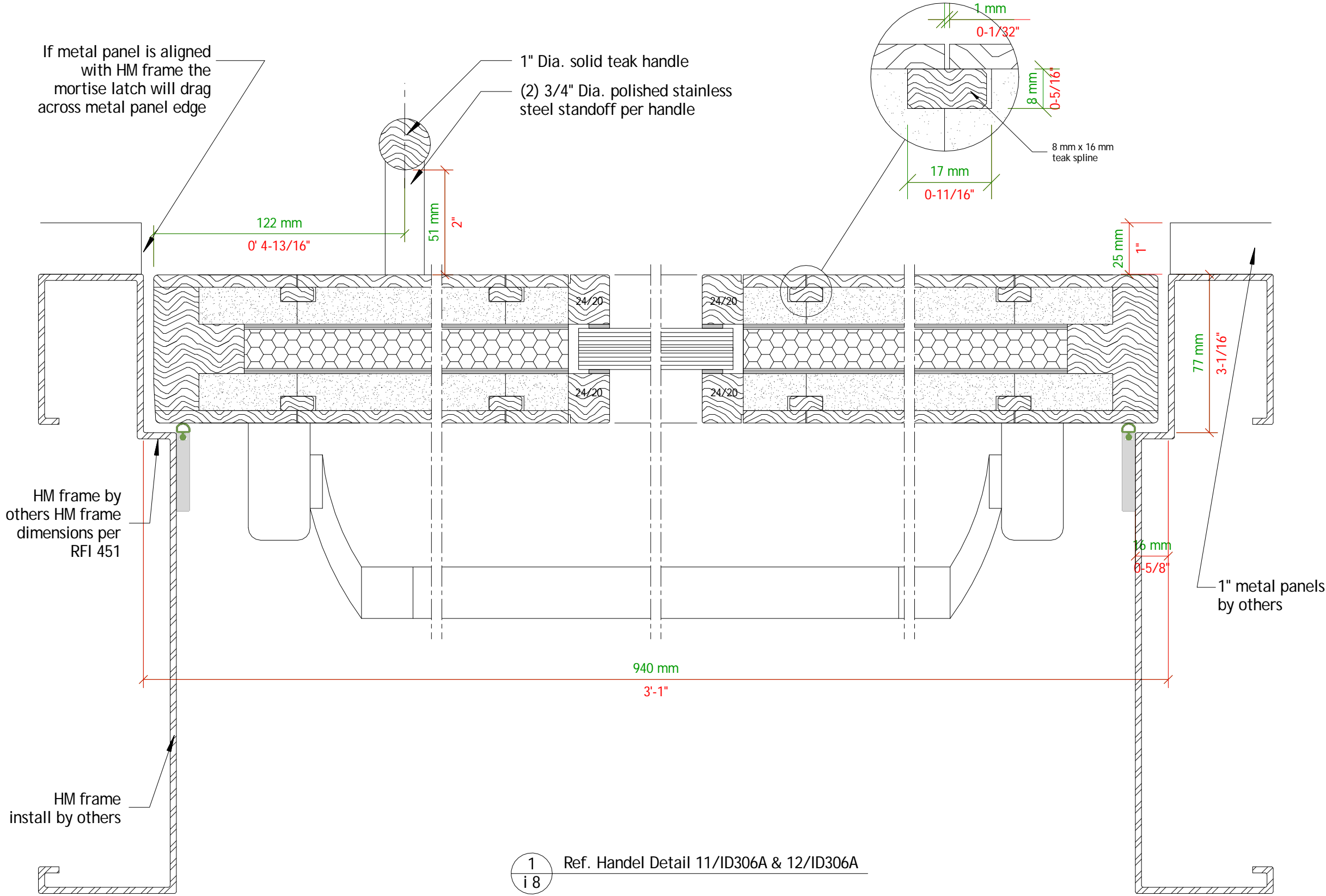
Drawing: Section detail @ door 101D

Project: Dream Downtown  
Architect: Handel Architects LLP  
Builder: Mc Gowan Builders, Inc.

Scale: 1 : 2 (6" = 1'-0")  
Date: August 26, 2010  
Drawn by: R McGrath

Specifications:

Schedule on Page: S 1  
Material Specifications on Page: S 2  
Revision Date: 10/5/10  
Revision Detail on Page: S 4



Inch measurements are rounded to the nearest 1/16";  
Units will be manufactured to metric dimensions.

Drawing Number:  
Dr2-i08-r1

Page:  
i 8



The Case Group, LLC. · 195 Cohoes Ave. · Green Island, NY 12183  
Phone: 518.720.3100 · Fax: 518.720.3110 · 1.800.227.3957

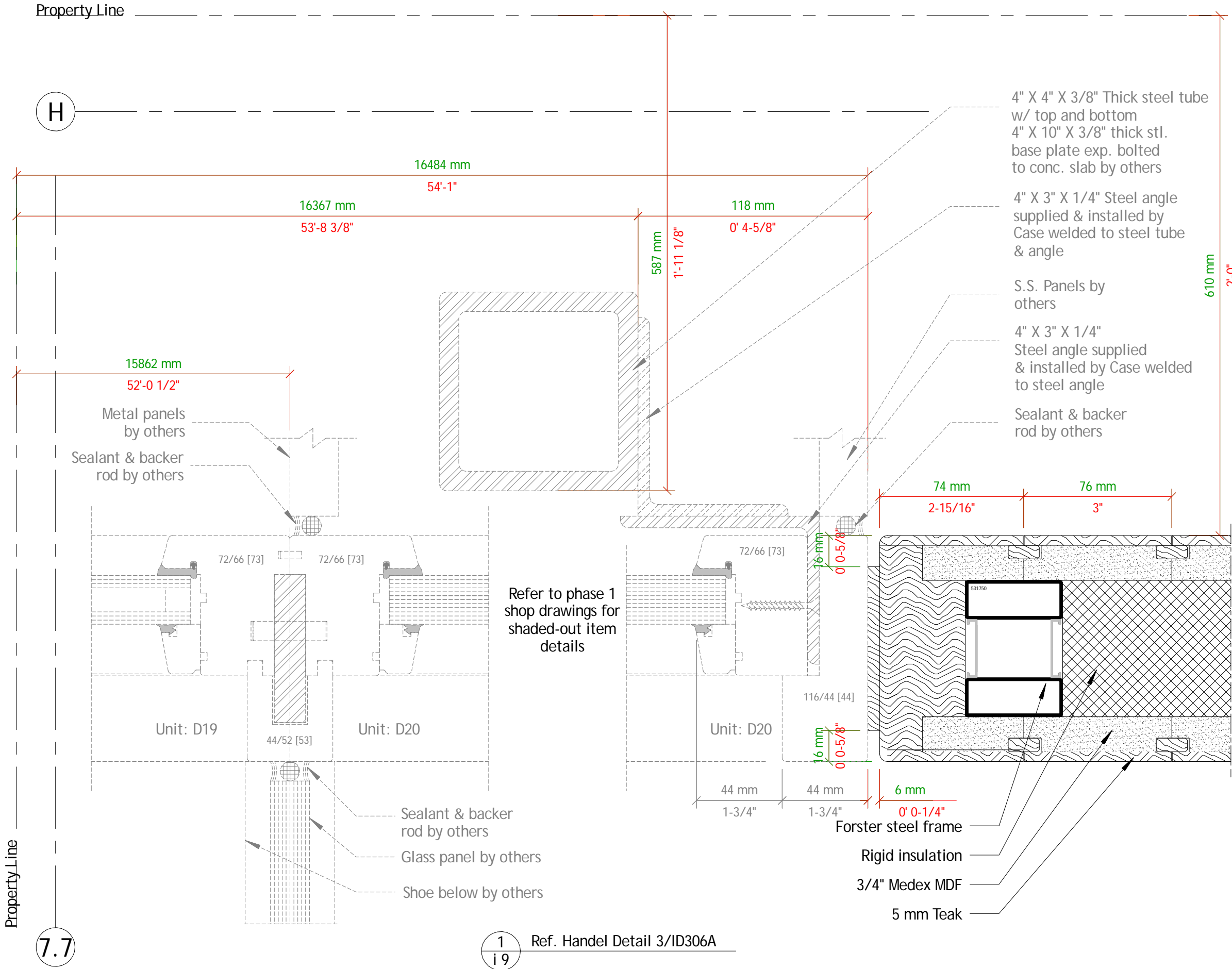
Drawing: Jamb detail @ 16th st south storefront  
west end of fixed panels at transom

Project: Dream Downtown  
Architect: Handel Architects LLP  
Builder: Mc Gowan Builders, Inc.

Scale: 1 : 2 (6" = 1'-0")  
Date: August 26, 2010  
Drawn by: R McGrath

Specifications:  
Schedule on Page: S 1  
Material Specifications on Page: S  
Revision Date: 10/5/10  
Revision Detail on Page: S 4

Inch measurements are rounded to the nearest 1/16";  
Units will be manufactured to metric dimensions.



The Case Group, LLC. · 195 Cohoes Ave. · Green Island, NY 12183  
Phone: 518.720.3100 · Fax: 518.720.3110 · 1.800.227.3957

Drawing: Section at transom  
16th st south storefront

Project: Dream Downtown  
Architect: Handel Architects LLP  
Builder: Mc Gowan Builders, Inc.

Scale: 1 : 2 (6" = 1'-0")  
Date: August 26, 2010  
Drawn by: R McGrath

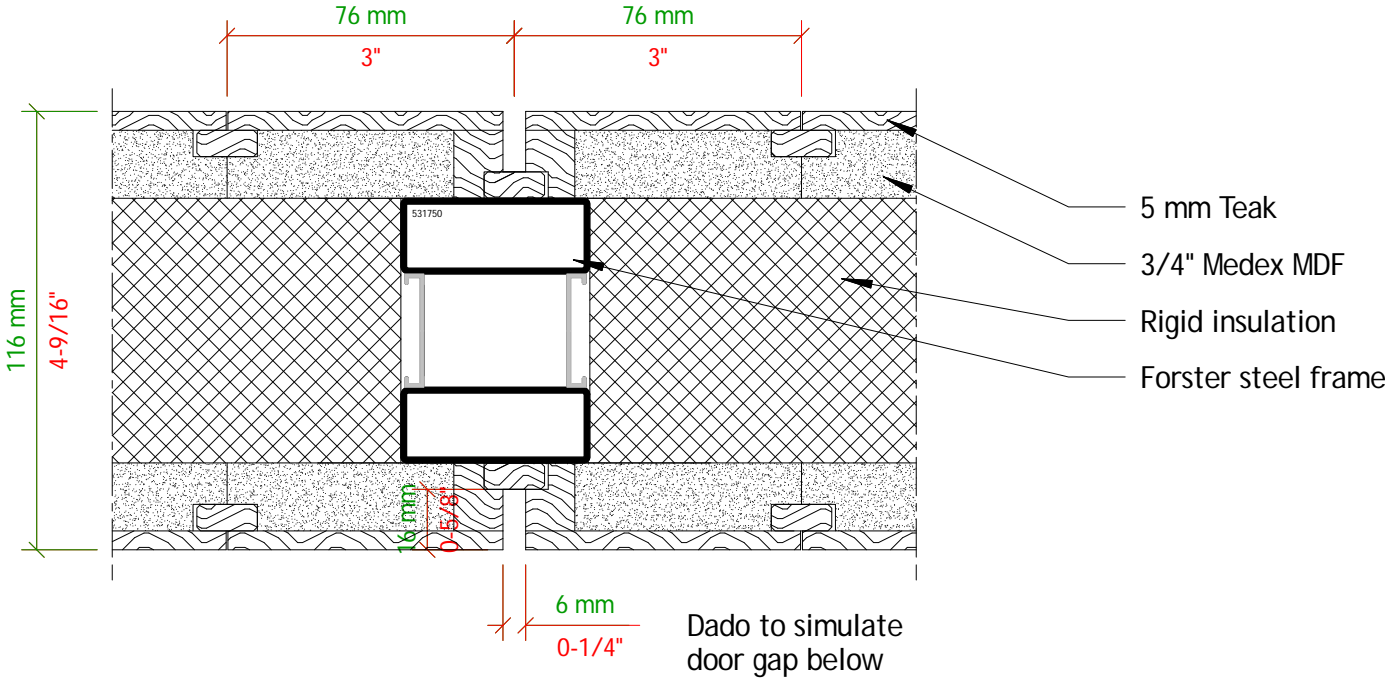
Specifications:

Schedule on Page: S 1  
Material Specifications on Page: S 2  
Revision Date: 10/5/10  
Revision Detail on Page: S 4

Inch measurements are rounded to the nearest 1/16";  
Units will be manufactured to metric dimensions.

Drawing Number:  
Dr2-i10-r1

Page:  
i 10



1  
i 10 Typical transom section above gap between doors

The Case Group, LLC. · 195 Cohoes Ave. · Green Island, NY 12183  
Phone: 518.720.3100 · Fax: 518.720.3110 · 1.800.227.3957

Drawing: Jamb detail @ 16th st south  
transom above door 101L

Project: Dream Downtown  
Architect: Handel Architects LLP  
Builder: Mc Gowan Builders, Inc.

Scale: 1 : 2 (6" = 1'-0")  
Date: August 26, 2010  
Drawn by: R McGrath

Specifications:

Schedule on Page: S 1

Material Specifications on Page: S 2

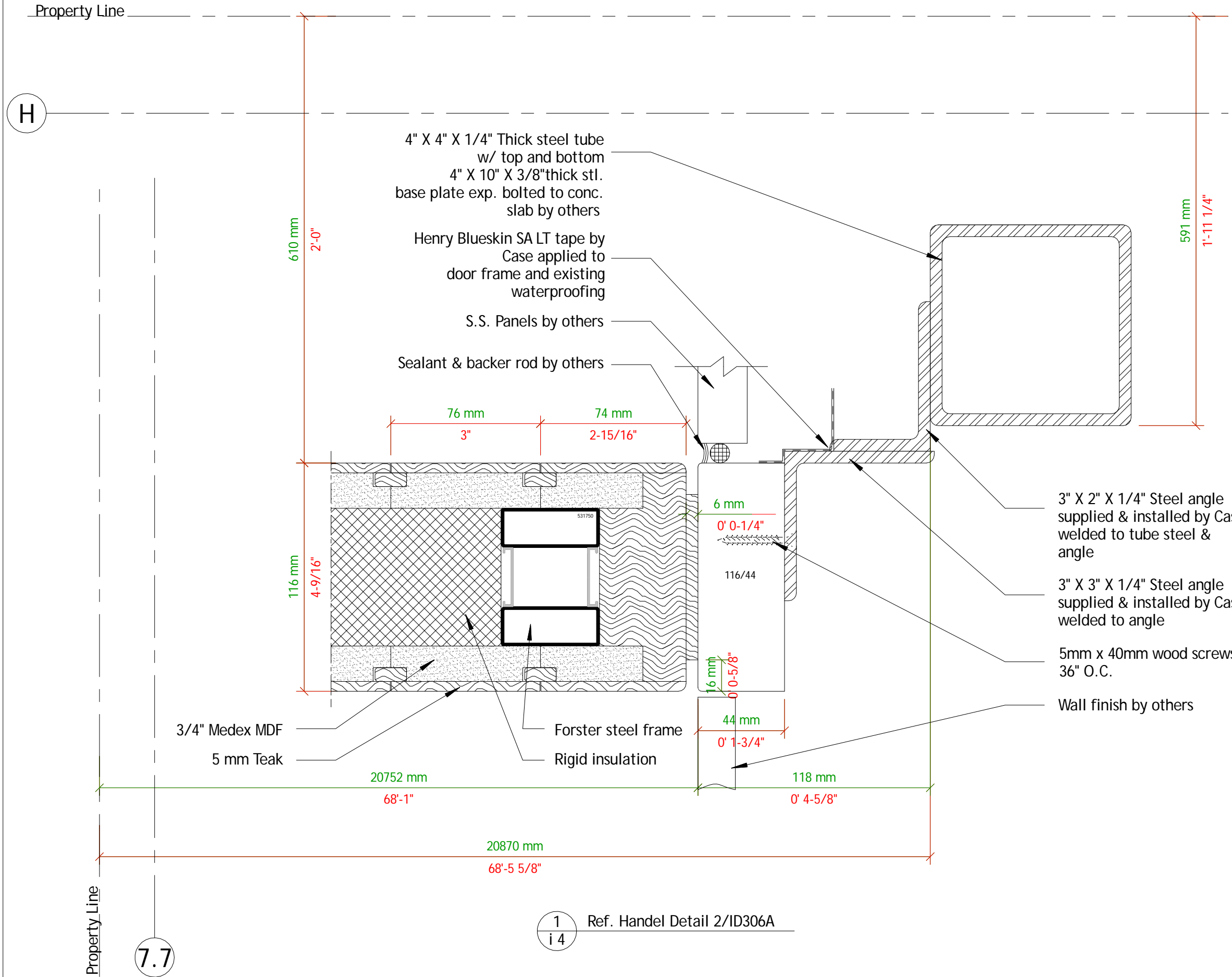
Revision Date: 10/5/10

Revision Detail on Page: S 4

Inch measurements are rounded to the nearest 1/16";  
Units will be manufactured to metric dimensions.

Drawing Number:  
Dr2-i11-r1

Page:  
i 11



The Case Group, LLC. · 195 Cohoes Ave. · Green Island, NY 12183  
Phone: 518.720.3100 · Fax: 518.720.3110 · 1.800.227.3957

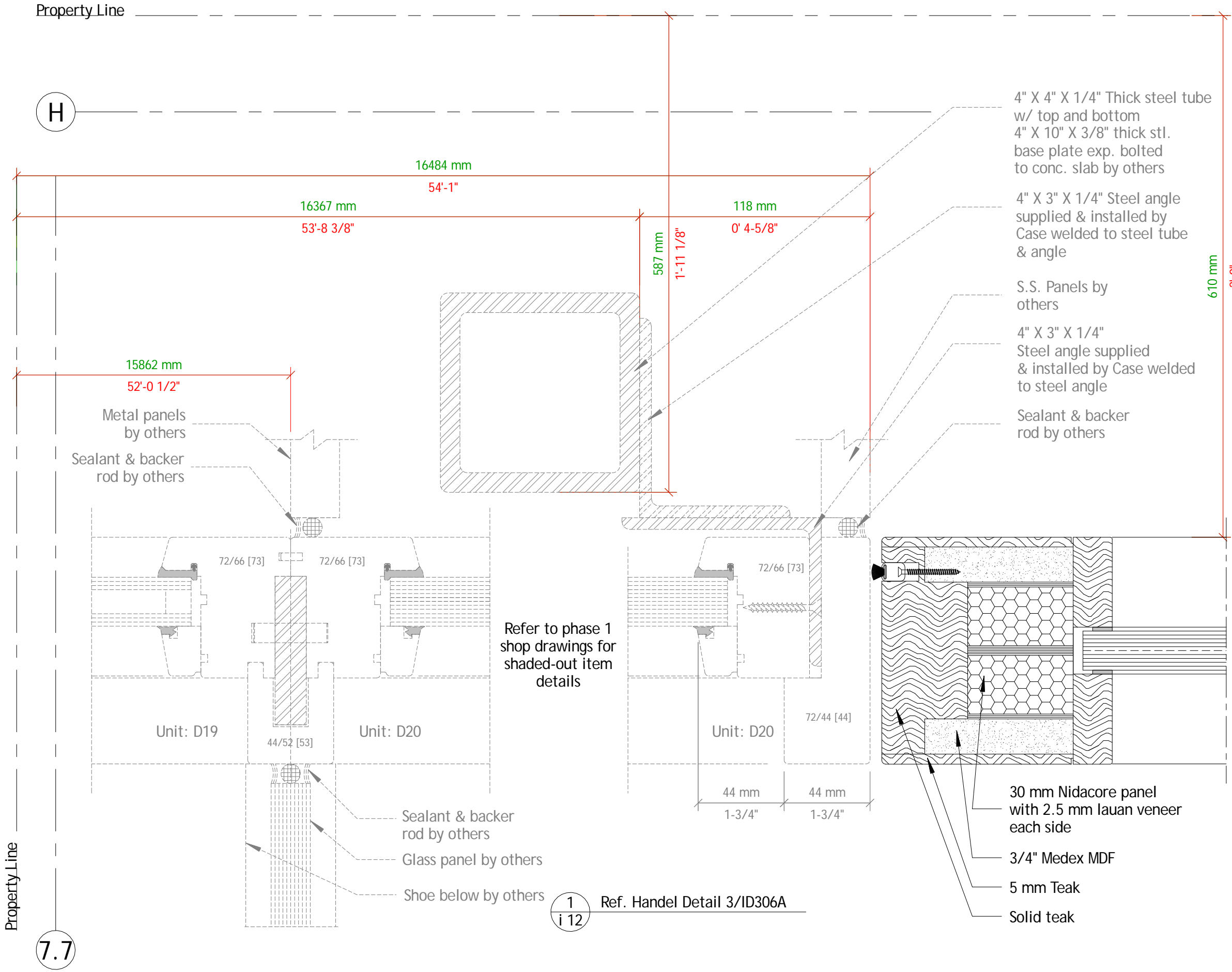
Drawing: Jamb detail @ 16th st south storefront  
west end of fixed panels at door 101J

Project: Dream Downtown  
Architect: Handel Architects LLP  
Builder: Mc Gowan Builders, Inc.

Scale: 1 : 2 (6" = 1'-0")  
Date: August 26, 2010  
Drawn by: R McGrath

Specifications:  
Schedule on Page: S 1  
Material Specifications on Page: S 2  
Revision Date: 10/5/10  
Revision Detail on Page: S 4

Inch measurements are rounded to the nearest 1/16";  
Units will be manufactured to metric dimensions.



The Case Group, LLC. · 195 Cohoes Ave. · Green Island, NY 12183  
Phone: 518.720.3100 · Fax: 518.720.3110 · 1.800.227.3957

Drawing: Section details @ door 101D

Project: Dream Downtown

Architect: Handel Architects LLP

Builder: Mc Gowan Builders, Inc.

Scale: 1 : 2 (6" = 1'-0")  
Date: August 26, 2010  
Drawn by: R McGrath

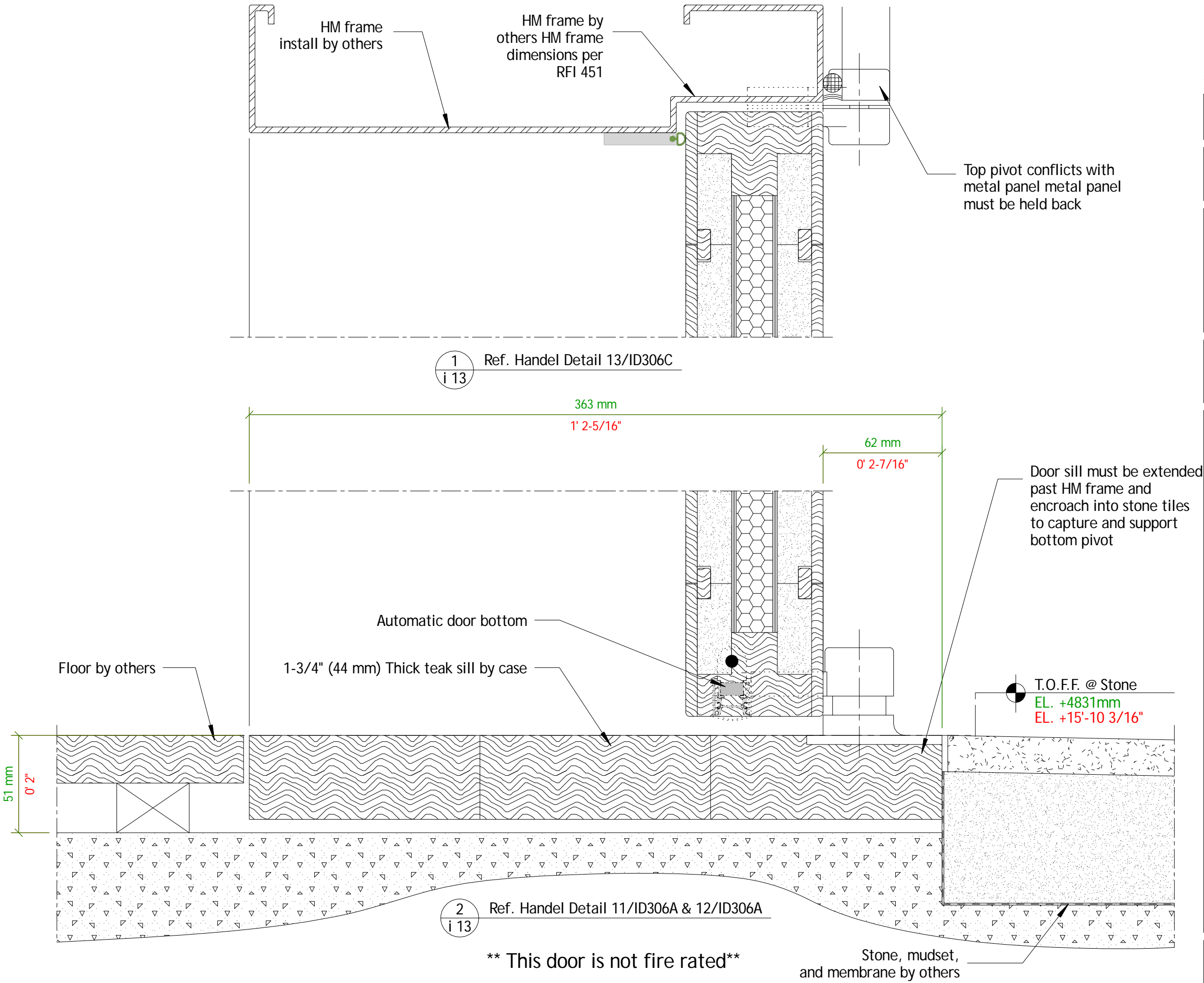
Specifications:

Schedule on Page: S 1

Material Specifications on Page: S 2

Revision Date: 10/5/10

Revision Detail on Page: S 4



1  
i 13  
Ref. Handel Detail 13/ID306C

363 mm

1' 2-5/16"

62 mm

0' 2-7/16"

Door sill must be extended  
past HM frame and  
encroach into stone tiles  
to capture and support  
bottom pivot

T.O.F.F. @ Stone  
EL. +4831mm  
EL. +15'-10 3/16"

2  
i 13  
Ref. Handel Detail 11/ID306A & 12/ID306A

\*\* This door is not fire rated\*\*

Stone, mudset,  
and membrane by others

Drawing Number:

Dr2-i13-r1

Page:

i 13

Inch measurements are rounded to the nearest 1/16";  
Units will be manufactured to metric dimensions.

The Case Group, LLC. · 195 Cohoes Ave. · Green Island, NY 12183  
Phone: 518.720.3100 · Fax: 518.720.3110 · 1.800.227.3957

Drawing: Section at doors 101J, 101K, 101L door handles

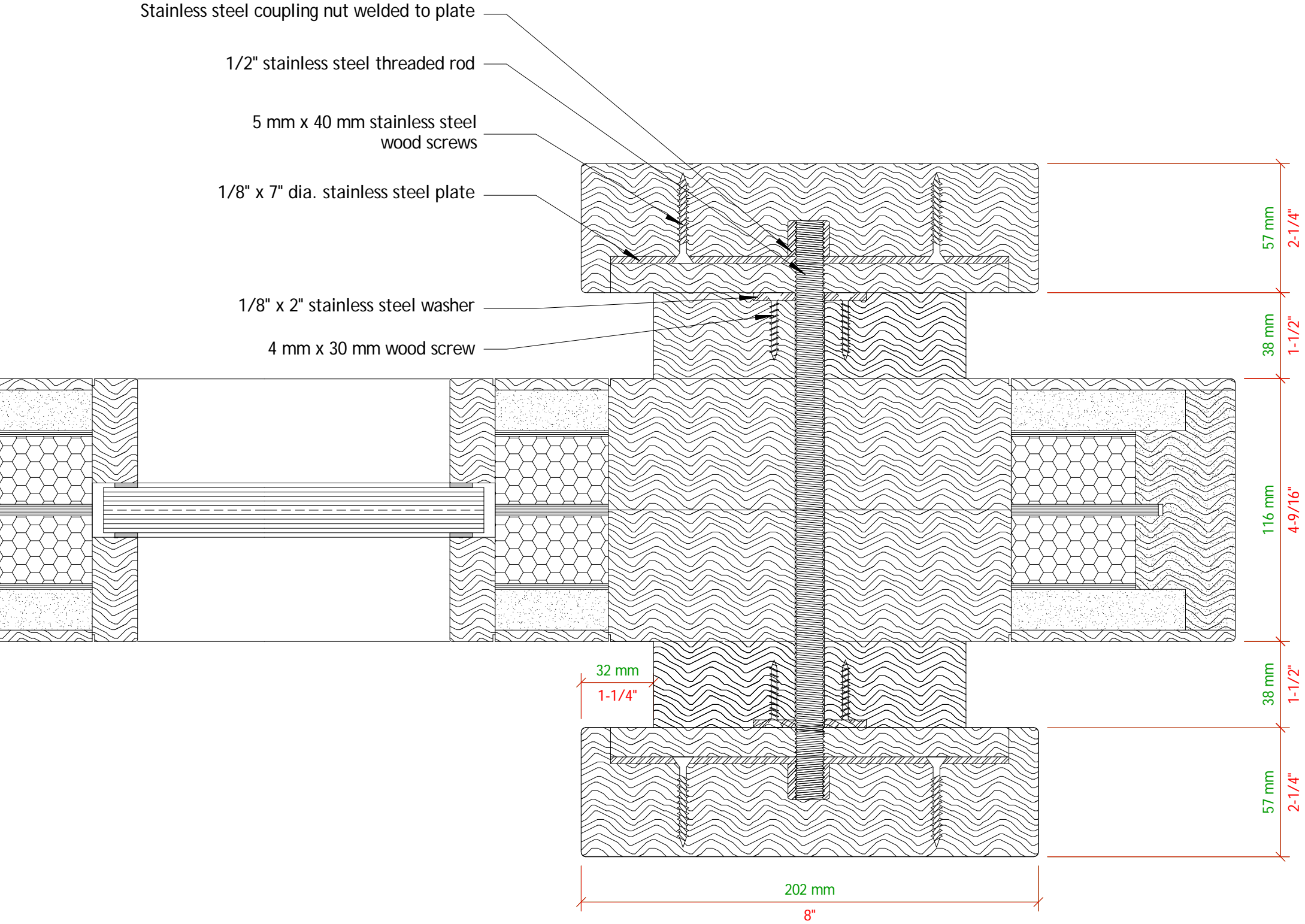
Project: Dream Downtown  
Architect: Handel Architects LLP  
Builder: Mc Gowan Builders, Inc.

Scale: 1 : 2 (6" = 1'-0")  
Date: August 26, 2010  
Drawn by: R McGrath

Specifications:  
Schedule on Page: S 1  
Material Specifications on Page: S 2  
Revision Date: 10/5/10  
Revision Detail on Page: S 4

Inch measurements are rounded to the nearest 1/16";  
Units will be manufactured to metric dimensions.

Drawing Number: Dr2-i14-r1  
Page: i 14



1 Section at doors 101J, 101K, 101L door handles  
i 14



Drawing: Section at door 101D handle

Project: Dream Downtown

Architect: Handel Architects LLP

Builder: Mc Gowan Builders, Inc.

Scale: 1 : 1 (1" = 1")  
Date: August 26, 2010  
Drawn by: R McGrath

Specifications:

Schedule on Page: S 1

Material Specifications on Page: S2

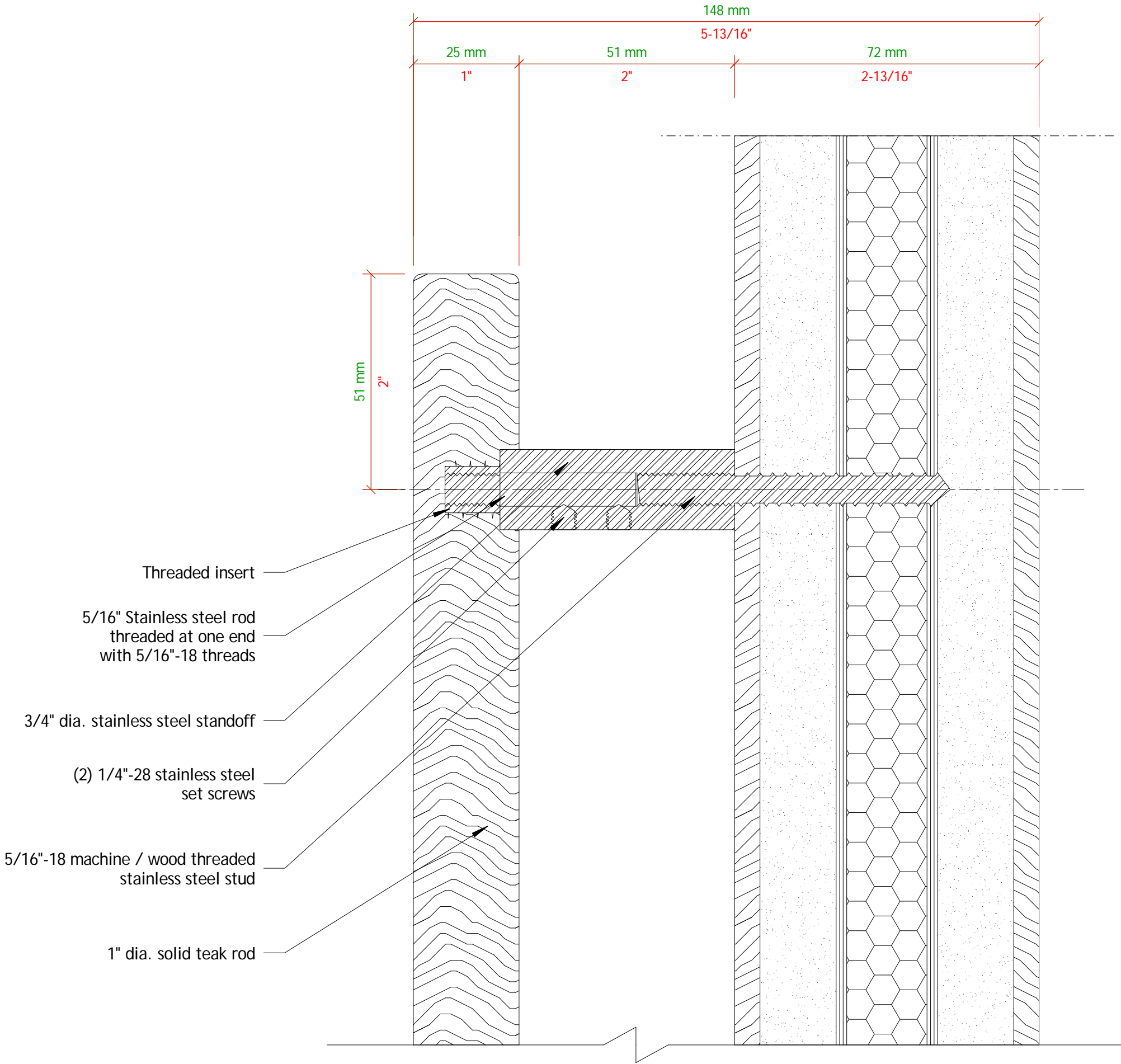
Revision Date: 10/5/10

Revision Detail on Page: S 4

Inch measurements are rounded to the nearest 1/16";  
Units will be manufactured to metric dimensions.

Drawing Number:  
Dr2-i15-r1

Page:  
i 15



Drawing: Section at door handles  
101E, 101F, 101G, 107

Project: Dream Downtown  
Architect: Handel Architects LLP  
Builder: Mc Gowan Builders, Inc.

Scale: 1 : 1 (1" = 1")  
Date: August 26, 2010  
Drawn by: R McGrath

Specifications:  
Schedule on Page: S 1  
Material Specifications on Page: S2  
Revision Date: 10/5/10  
Revision Detail on Page: S 4

Inch measurements are rounded to the nearest 1/16";  
Units will be manufactured to metric dimensions.

